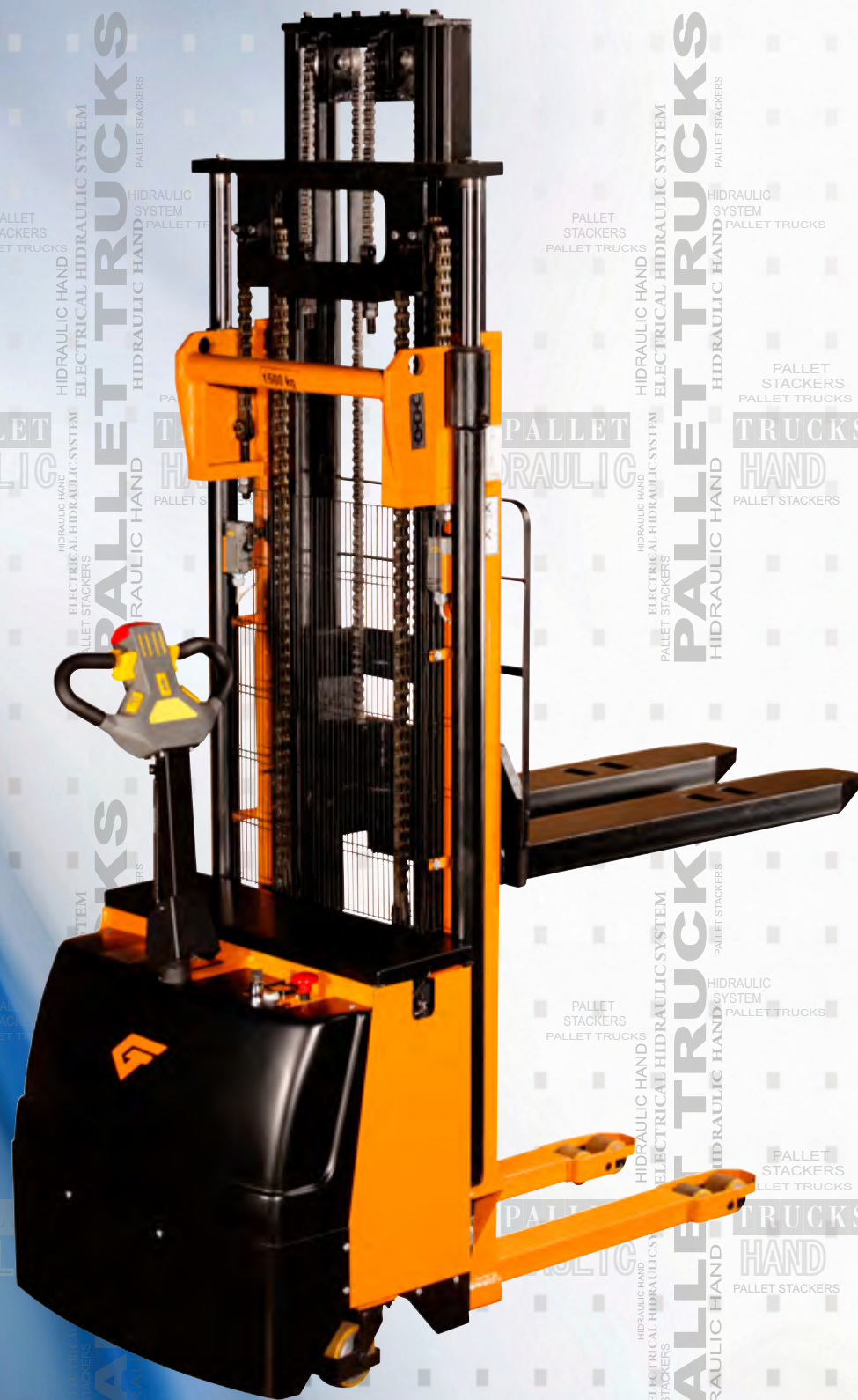


**SKLADOVA TEHNIKA**  
**JOINT-STOCK COMPANY**

# HAND PALLET TRUCKS AND STACKERS



[www.st-bg.com](http://www.st-bg.com)

**HAND PALLET TRUCKS AND STACKERS**

One of the main activities in contemporary development of company Skladova Tehnika Jsc, is design and production of goods, used for servicing in warehouse premises and internal factory transport. A wide range of hand pallet trucks and stackers have been designed, satisfying the customer's needs for different loading and hauling activities, and transportation between workshops and sections. The trucks are significant for their diversity, easy maintenance and high reliability. All of them conform to the highest international standards for quality and safety regulations. They are intended to operate in chemically non-aggressive environment. Our company keeps on stock great variety of spare parts and offers fast and competent servicing. For direct vertical transportation at different levels in production buildings, our company offers stationary hydraulic platforms with various capacity and hoisting height.

**HAND PALLET TRUCKS**

A Hand pallet truck is cheap and widely spread device for transportation of palletized loads on solid, even and smooth floors. Moving the truck is manually, and lifting the load is enabled by hydraulic system with manual pumping. Our company provides some modifications of hand pallet trucks –standard, high-lifting and platform.

**KT20H; KT20H1.0; KT20H2.5; KT20H3.0**

<b>Capacity:</b>	<b>KT20H</b>	2000kg
	<b>KT20H2.5</b>	2500kg
	<b>KT20H3.0</b>	3000kg
<b>Forks length:</b>	<b>up to</b>	1200mm
<b>Capacity:</b>	<b>KT20H1.0</b>	1000kg
<b>Forks length:</b>		1500mm
		1800mm
<b>Lifting height:</b>		200mm
<b>Lower lost height:</b>		85mm
<b>Forks width:</b>		540mm
		685mm



KT20H



KTB10

**KTB10**

<b>Capacity:</b>	1000kg
<b>Lifting height:</b>	800mm
<b>Lower lost height:</b>	85mm
<b>Forks length:</b>	1120mm
<b>Forks width:</b>	540mm

**KTB10-П**



**KTB10-П**

<b>Capacity:</b>	1000kg
<b>Lifting height:</b>	1070mm
<b>Lower lost height:</b>	365mm
<b>Platform length:</b>	1000mm
<b>Platform width:</b>	600mm

**MANUAL STACKERS**

Manual stackers are auxiliary loading/unloading devices with manual servicing. Lifting the load is enabled by means of hydraulic pump with manual pumping or manual winch.

They are intended to transport and lift palletized loads, as well as sorting them onto racks, observing the maximum lifting height.

Horizontal transportation of loads requires solid, even and smooth floors /max 1% slope/.

\*For all models hand operated and handlifting forklifts, the step of uplift without load is three times greater than the step of loaded lifting.

**BT1-X5**

<b>Capacity:</b>	500kg
<b>Lifting height:</b>	1600mm
<b>Lower lost height:</b>	85mm
<b>Forks length:</b>	1120mm
<b>Forks width:</b>	540mm
<b>Aisle width:</b>	2500mm
<b>Minimum turning radius:</b>	1650mm



BT1-X5

B10-16



**B10-16**

Capacity: 1000kg  
 Lifting height: 1600mm  
 Lower lost height: 85mm  
 Forks length: 1120mm  
 Forks width: 540mm  
 Aisle width: 2500mm  
 Minimum turning radius: 1650mm



B10.20



B10.20; B10.25; B10.30

Capacity: 1000kg  
 Lifting height: 2000mm  
 2500mm  
 3000mm  
 Lower lost height: 85mm  
 Forks length: 1120mm  
 Forks width: 540mm  
 Aisle width: 2500mm  
 Minimum turning radius: 1650mm

STACKERS WITH VERTICAL ELECTRIC MOVEMENT  
**B10.16-E; B10.20-E; B10.25-E; B10.30-E**

Stackers with electro-hydraulic lifting of loads, enabled by means of hydraulic cylinder, actuated by hydraulic turbo-alternator with DC el. motor. The supply is ensured by accumulating batteries. The horizontal transportation is achieved manually.

Capacity: 1000kg  
 Lifting height: 1600mm  
 2000mm  
 2500mm  
 3000mm  
 Lower lost height: 85mm  
 Forks length: 1120mm  
 Forks width: 540mm  
 Lifting speed loaded/unloaded: 0.11/0.14m/s  
 Lowering speed loaded/unloaded: 0.10m/s  
 Aisle width: 2500mm  
 Minimum turning radius: 1650mm

B10.30-E



PALLET TRUCK AND STACKERS WITH FULL ELECTRIC MOVEMENT

Trucks with electro-hydraulic lifting of loads, and horizontal transportation is achieved by means of electro-mechanic motor reducer. Depending on the hoisting height of the load, the stackers are produced in three modifications – single-mast, double-mast and triplex-mast constructions. At customer's request a working platform can be mounted on the trucks, used as activity place for the operator.

KT20EX



KT20EX

Capacity: 2000kg  
 Lifting height: 200mm  
 Lower lost height: 85mm  
 Forks length: 1120mm  
 Forks width: 540mm  
 Lifting speed loaded /unloaded: 0.05/0.07m/s  
 Lowering speed loaded /unloaded: 0.05m/s  
 Travelling speed: 4km/h  
 Minimum turning radius: 1552mm  
 Maximal overcome slope loaded/unloaded: 5%/10%  
 Option: driver's platform

B10.16-CEX



**SINGLE-MAST ELECTRIC STACKERS**  
**B10.16-CEX; B15.16-CEX; B20.16-CEX**

<b>Capacity:</b>	1000kg 1500kg 2000kg
<b>Lifting height:</b>	1600mm
<b>Lower lost height:</b>	85mm
<b>Forks length:</b>	1120mm
<b>Forks width:</b>	540mm
<b>Lifting speed loaded /unloaded:</b>	0.11/0.14m/s
<b>Lowering speed loaded /unloaded:</b>	0.10m/s
<b>Travelling speed:</b>	4km/h
<b>Aisle width:</b>	2250mm
<b>Maximal overcome slope loaded/unloaded:</b>	5%/10%
<b>Minimum turning radius:</b>	1750mm
<b>Option:</b>	driver's platform

B15.45TCEX



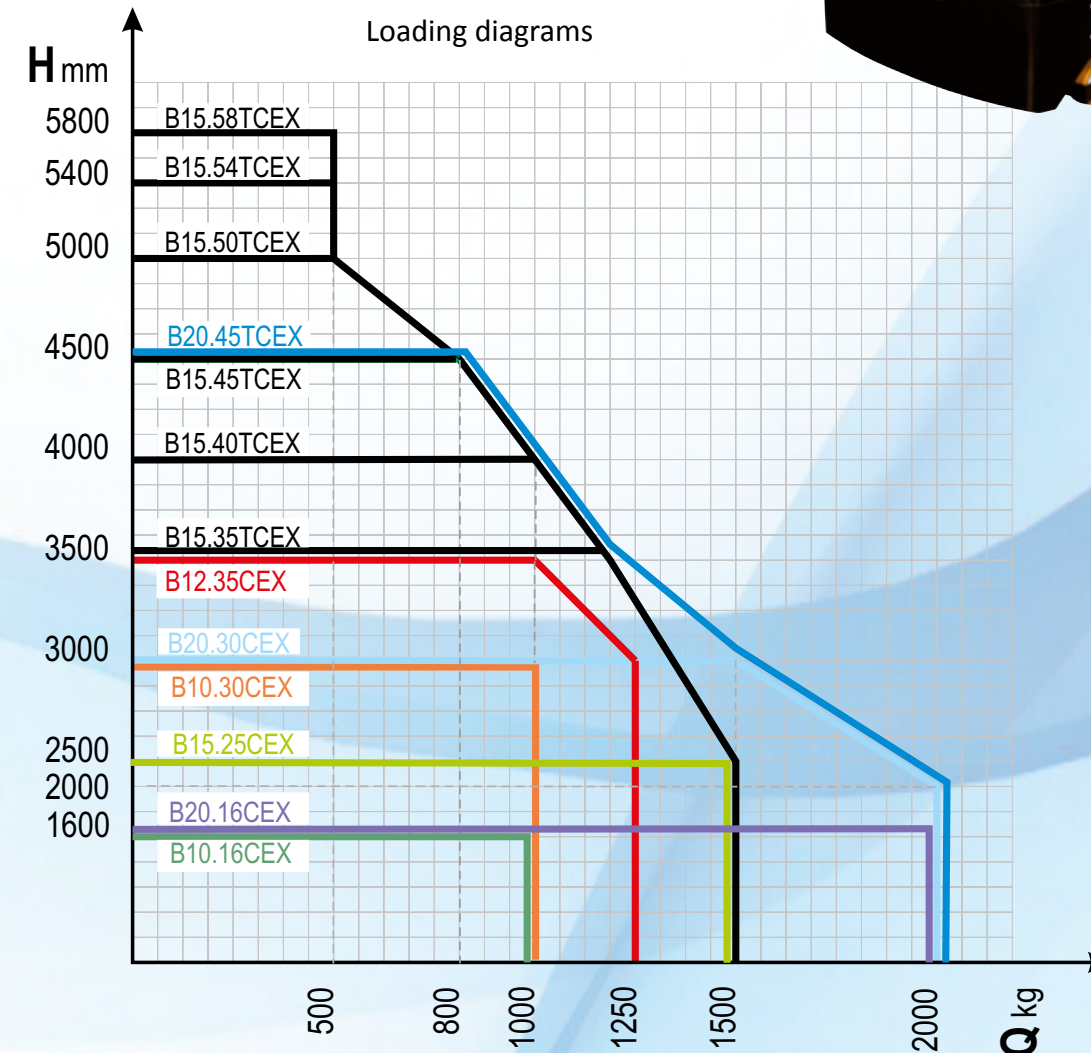
**TRIPLE-MAST STACKERS**  
**B15.35-TCEX; B15.40-TCEX; B15.45-TCEX; B15.50-TCEX;**  
**B15.54-TCEX; B15.58-TCEX; B20.35-TCEX; B20.40-TCEX;**  
**B20.45-TCEX**

<b>Capacity:</b>	1500, 2000kg
<b>Lifting height:</b>	3500, 4000, 4500, 5000, 5400, 5800mm
<b>Lower lost height:</b>	90mm
<b>Forks length:</b>	1120mm
<b>Forks width:</b>	560mm
<b>Lifting speed loaded/unloaded:</b>	0.08/0.11m/s
<b>Lowering speed loaded/unloaded:</b>	0.11m/s
<b>Travelling speed:</b>	4km/h
<b>Aisle width:</b>	2300mm
<b>Maximal overcome slope loaded/ unloaded:</b>	5%/10%
<b>Minimum turning radius:</b>	1800mm
<b>Option:</b>	driver's platform

**DOUBLE-MAST STACKERS**  
**B10.20-CEX; B10.25-CEX; B10.30-CEX; B12.20-CEX;**  
**B12.25-CEX; B12.30-CEX; B12.35-CEX; B15.25-CEX;**  
**B15.30-CEX; B20.25-CEX; B20.30-CEX**

<b>Capacity:</b>	1000, 1250 1500, 2000kg
<b>Lifting height:</b>	2000, 2500 3000, 3500mm
<b>Lower lost height:</b>	85, 90mm
<b>Forks length:</b>	1120mm
<b>Forks width:</b>	540, 560mm
<b>Lifting speed loaded/unloaded:</b>	0.11/0.14m/s 0.08/0.11m/s
<b>Lowering speed loaded/unloaded:</b>	0.10m/s
<b>Travelling speed:</b>	4km/h
<b>Aisle width:</b>	2300mm
<b>Maximal overcome slope loaded/ unloaded:</b>	5%/10%
<b>Minimum turning radius:</b>	1750, 1800mm
<b>Option:</b>	driver's platform

B10.30-CEX



Control panel





*Elected partner in over 50 countries!*  
*Skladova Tehnika-Isc*

5000TK-V-2016

[www.st-bg.com](http://www.st-bg.com)