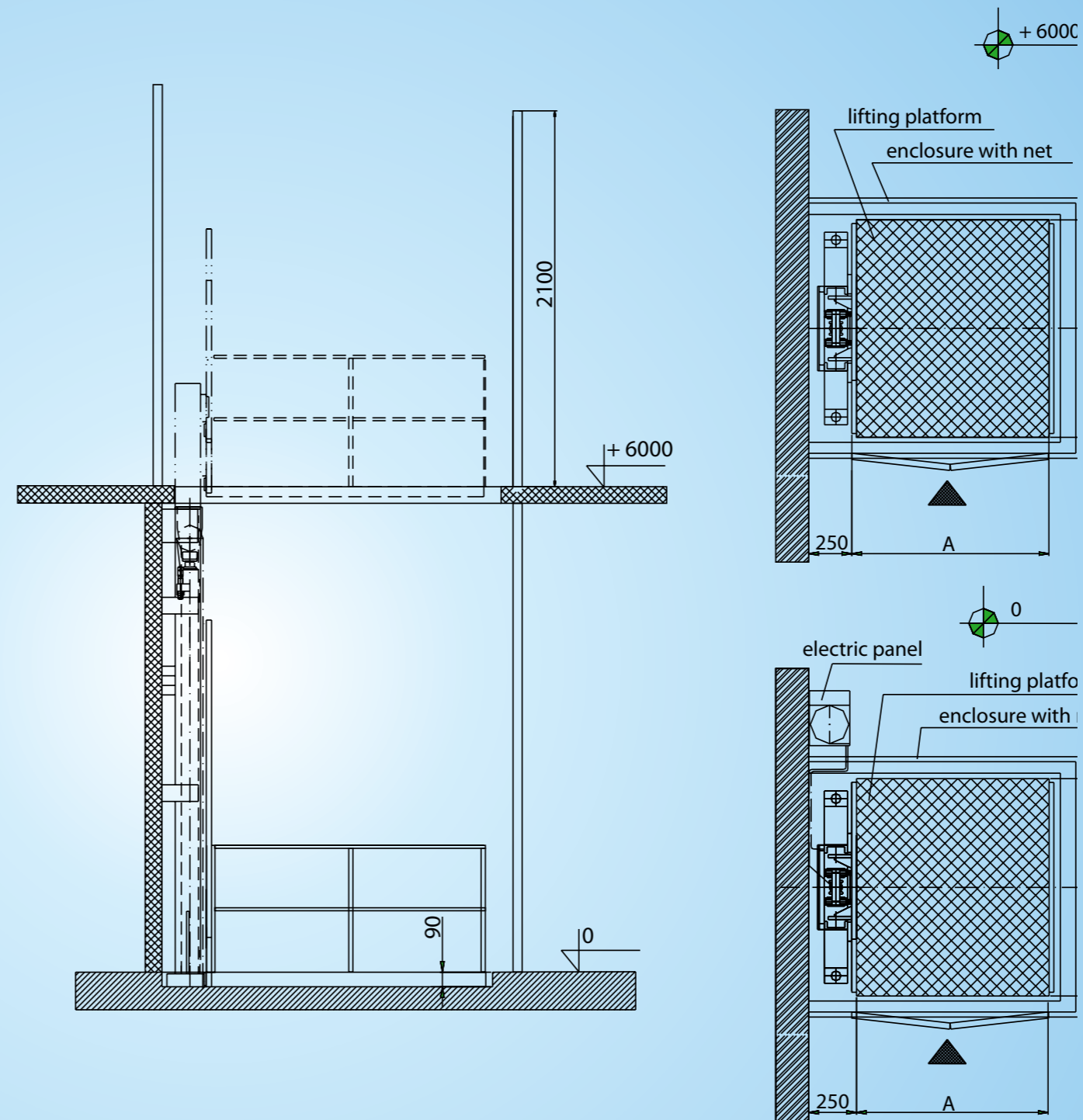


LIFTING PLATFORMS



LIFTING PLATFORMS



- | | |
|---------------------|---------------------------|
| Capacity : | - up to 1000 kg |
| Lifting height: | - up to 6000 mm |
| Lifting speed: | - 0.1 m/s |
| Dimensions (A x B): | - up to 1500 x 1500 mm |
| Electric supply: | - 380V / 50Hz |
| Lifting device: | - hydraulic system |
| | - electric hoist |
| Enclosure: | - metal net construction |
| Options: | - various technical datas |

01/2008 www.sk-advancing.com

SKLADOVA TEHNIKA



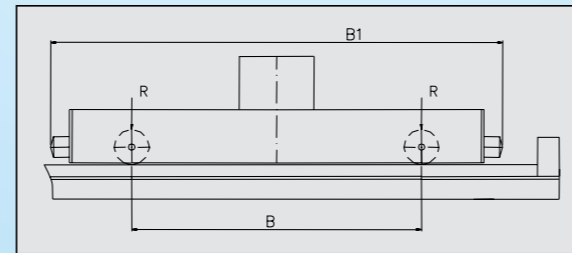
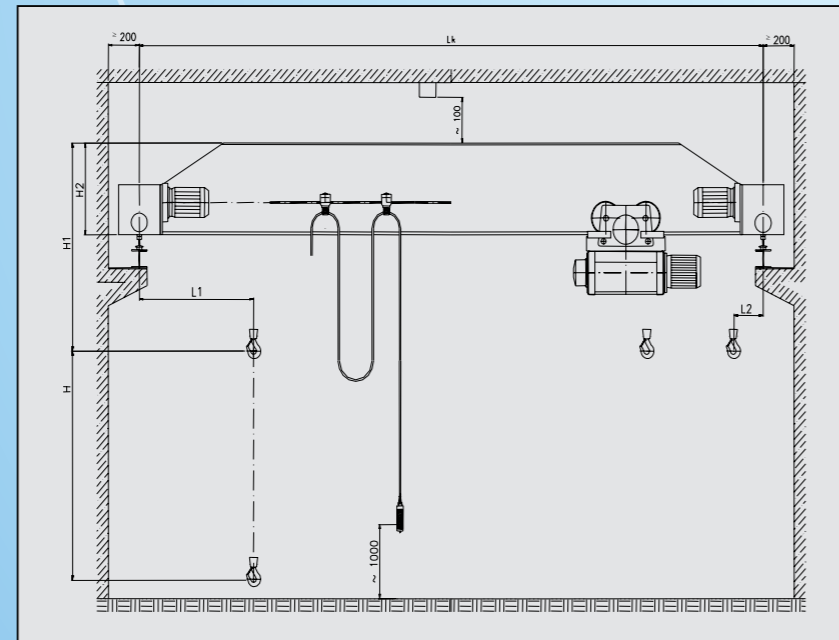
SINGLE-GIRDER OVERHEAD CRANES

- Capacity: - up to 12500 kg
 Hoisting height: - up to 9 m
 Crane span: - up to 22.5 m
 Hoisting speed: - 8/2 and 4/1 m/min
 Travelling speed - electric hoist: - 20/6 and 30/10 m/min
 Travelling speed - crane: - 20/6 and 30/10 m/min
 Working rate group: - 2m
 Environment:
 - temperature: - from -20°C up to +40°C
 - humidity: - up to 80% at 20°C
 Control: - by a control box

- Options:
 - different crane span (Lk)
 - different hoisting height (H)
 - with frequency control

The cranes are not designed for operation in chemically aggressive and explosive environments.

Capacity kg	Dimensions								Loading	
	Lk m	L1	L2	B mm	B1 mm	H	H1	H2	R _{max} kN	R _{min} kN
2000	4.5	750	980	1500	2030	9000	1335	290	5.5	2.1
	7.5			1395	350		12.8	2.5		
	10.5			1610	565		14.1	3.4		
	13.5			1810	675		16.2	5.3		
	16.5			1860	715		18.6	7.5		
3200	4.5	755	1020	1500	2030	9000	1400	290	15.3	2.7
	7.5			1775	590		18.9	3.1		
	10.5			1875	665		20.9	4.0		
	13.5			1925	715		23.4	5.9		
	16.5			1920	760		25.5	8.1		
5000	4.5	770	1010	1500	2030	8000	1645	360	27.6	4.1
	7.5			1955	590		29.6	5.2		
	10.5			2005	695		31.6	6.1		
	13.5			2045	760		34.0	7.7		
	16.5			2145	860		36.6	9.8		
8000	4.5	870	1340	1500	2030	8500	2295	1010	42.6	14.9
	7.5			2490	930		48.6	8.0		
	10.5			2540	980		51.5	9.6		
	13.5			2590	1030		54.6	11.8		
	16.5			2260	980		61.2	9.8		
10000	10.5	920	1385	2000	2590	8500	2310	1030	63.0	10.9
	13.5			2360	1080		66.1	12.8		
	16.5			2580	1030		73.5	11.5		
12500	10.5	1010	1360	2000	2590	8500	2630	1080	76.4	12.7
	13.5			2730	1180		80.6	15.1		
	16.5									



SINGLE-GIRDER SUSPENDED CRANES

- Capacity: - from 2000 up to 5000 kg
 Hoisting height: - up to 9 m
 Crane span: - up to 10 m
 Hoisting speed: - 8/2 and 4/1 m/min
 Travelling speed - electric hoist: - 20/6 and 30/10 m/min
 Travelling speed - crane: - 20/6 and 30/10 m/min
 Working rate group: - 2m
 Environment:
 - temperature: - from -20°C up to +40°C
 - humidity: - up to 80% at 20°C
 Control: - by a control box

- Options:
 - different crane span (Lk)
 - different hoisting height (H)
 - with frequency control

The cranes are not designed for operation in chemically aggressive and explosive environments.

Capacity kg	Dimensions								Loading	
	Lk m	L1	L2	B mm	B1 mm	H	H1	H2	R _{max} kN	R _{min} kN
2000	4	320	550	1500	1950	9000	1495	440	6.7	1.4
	7			1555	500		6.9	1.5		
	10			1595	540		7.4	1.8		
3200	4	320	600	1500	1950	9000	1665	540	10.6	1.8
	7			1835	540		10.9	2.0		
	10			1875	580		11.9	2.8		
5000	4	330	580	1500	1950	8000	1835	540	14.5	2.9
	7			1875	580		15.0	3.2		
	10			1935	640		16.4	3.4		

